

Palco InOut Solid Thinking

Lighting innovation for people.

Palco InOut

Solid Thinking

design Artec3 Studio

Palco InOut extends our collection of Palco floodlights developed for indoor into outdoor applications. Professional floodlights for architectural lighting with five different diameters starting at just 30mm to offer a range of incomparable solutions with luminous flux of up to 3500 lumen. Innovative Opti Beam optical technologies, with lenses and reflectors to combine comfort, clean beam outlines and power. Wide range of selection of optics, from spot cones to flood, wide flood and very wide flood (80°).

Palco InOut
ground or floor installation
Micro (ø30mm) / Mini (ø49mm) / Small (ø83mm) /
Medium (ø119mm) / Large ø137mm)



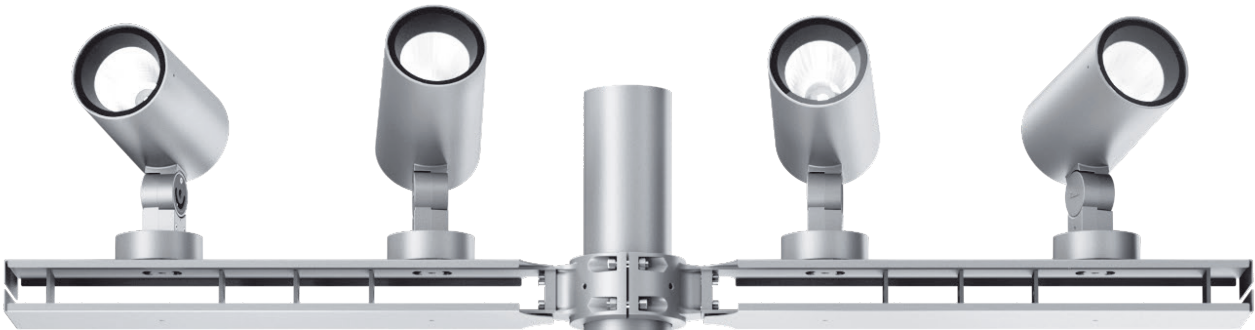
Large
Ø137mm
scale 1:50



Micro
Ø30mm
scale 1:50

It is also possible to choose between four luminous flux levels at different ambient temperatures, with source values from 230 to 3700 lumen. Professional optical and photometric accessories to adapt the luminous flux to specific application requirements. High chromatic quality and three colour temperatures available. Minimal design and optimal performance for applications in architectural and urban environments.

Palco InOut



MultiPalco InOut
pole or wall installation
(coming soon)
Small (ø83mm) / Medium
(ø119mm) / Large (ø137mm)

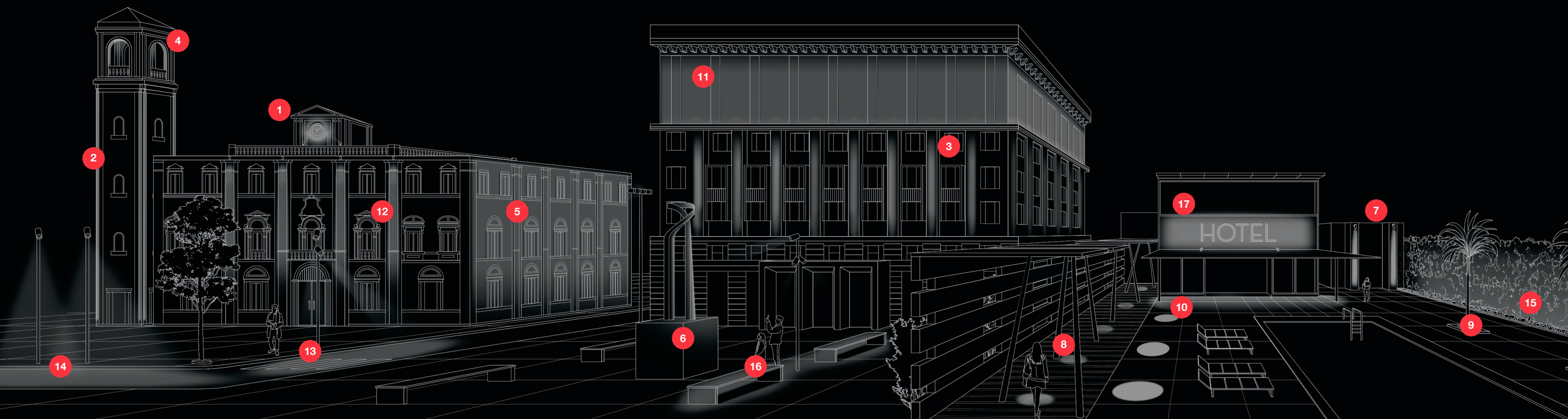


p. 12 possible combinations for pole or wall installation.



Palco InOut multiplies and combines lighting distributions to illuminate architecture from any distance, angle and surface, transforming the city into an urban stage.

Urban Lighting Scenario



Palco InOut Small (ø83mm) / Medium (ø119mm) / Large (ø 137mm)

- 1 Spot 9°-14°-15°**
Application: very concentrated beam to spotlight a detail of architecture
- 2 Medium 18°-25°**
Application: concentrated spotlight to highlight verticality for large distances
- 3 Flood 28°**
Application: upward medium beam lighting to paint architecture with light
- 4 Wide Flood 41°-47°**
Application: indirect wide beam lighting of the belfry to emphasize the internal volume
- 5 Very Wide Flood 75°-78°-79°**
Application: very wide beam to uniformly illuminate large surfaces such as facades
- 6 Elliptical with accessories**
Application: narrow elliptical beam to concentrate light only to the obelisk/pole installation

Palco InOut Micro (ø30mm) / Mini (ø49mm) / Small (ø83mm)

- 7 Spot 14°-15°-16°**
Application: concentrated floodlight to highlight verticality
- 8 Medium 23°-25°**
Application: medium beam light distribution to give the path a patterned recurrence of luminous circles
- 9 Wide Flood 41°- 42°**
Application: wide flood beam to uplight uniformly the foliage of the trees
- 10 Very Wide Flood 78°**
Application: very wide beam to light the pathway uniformly downward
- 11 Elliptical with accessories**
Application: grazing effect on facades up - or downward oriented

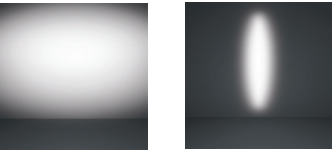
Accessories

- 12 Diffuser glass**
Application: soft yet highly concentrated light beam with a uniform effect
- 13 Honeycomb louvre**
Application: wide and comfortable light from every direction; ideal for pedestrian areas
- 14 Blade louvre**
Application: screened light along pedestrian areas and cycle paths for great visual comfort / pole installation
- 15 Cylindrical diffuser at a 45°**
Application: uniform and upward vertical wall lighting, without backlighting
- 16 Cylindrical screen**
Application: fully screened light concentrated only on benches / pole installation
- 17 Single directional fin**
Application: shaped lighting on façades avoiding obtrusive light

Optics



Spot 9°-14°-15°-16° Medium 18°-23°-25° Flood 28° Wide Flood 41°-42°-47°



Very Wide Flood 75°-78°-79° Elliptical*
* Elliptical optics are obtained by installing the specific accessory.



Opti Beam Reflector Opti Beam Lens Opti Beam Refractor

Overview



Micro (ø30mm)
2.5W / 160 or 175lm (system values)
14° / 25°



Mini (ø49mm)
6.5W / 375 to 480lm (system values)
16° / 23° / 42°



Small (ø83mm)
12 or 15W / 1240 to 1885lm (system values)
15° / 25° / 41° / 78°



Small (ø83mm)
(Coming soon, integral version)
Technical data to be confirmed
15° / 25° / 41° / 78°



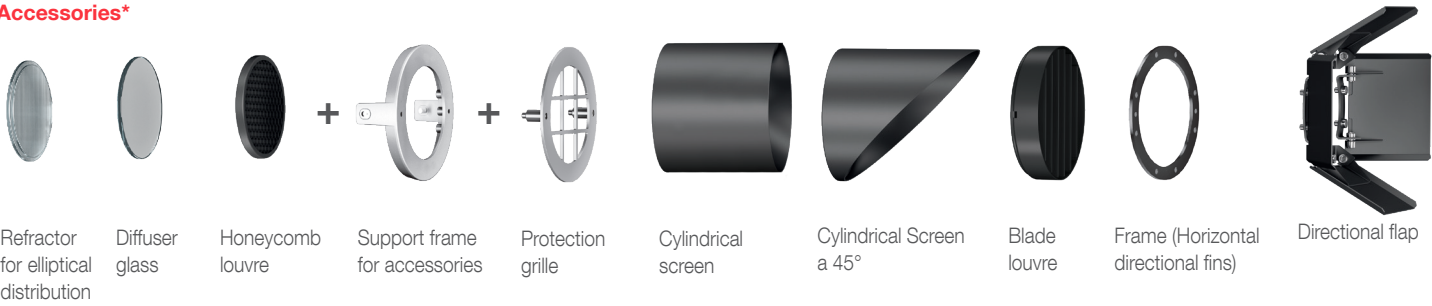
Medium (ø119mm)
14 to 28W / 1380 to 2560lm (system values)
14° / 25° / 47° / 75°



Large (ø137mm)
17 to 32W / 1310 to 3415lm (system values)
9° / 18° / 28° / 41° / 79°

Values refer to 3000k
Technical information may change alongside technological progress. Consult iguzzini.com for ongoing updates

Accessories*



Accessories inside the frame / IP66
max 2 accessories simultaneously



Mounting accessories

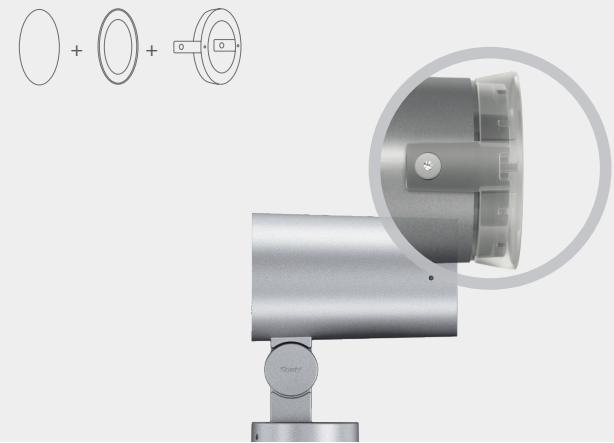
accessories outside the frame
max 1 accessory

Solid thinking
Sturdiness, versatility and functionality

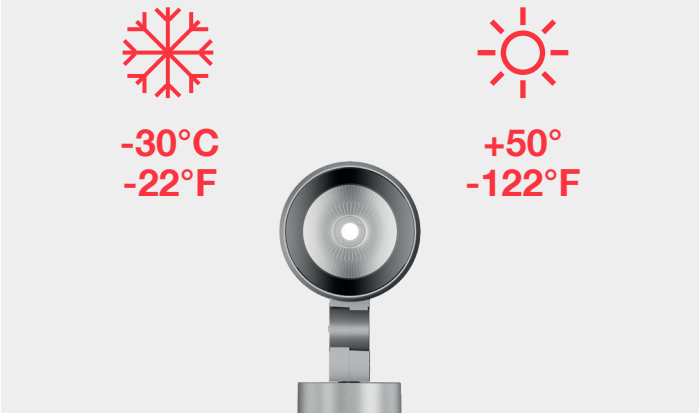
Palco InOut is designed to work in any setting. Each internal accessory is housed in a gasket and has protective glass to prevent penetration by dust and therefore the upkeep of the product's IP66 grade. The external accessories, on the other hand, have a hole to drain water and a screen to prevent the emission of stray light.

The different outputs available make it possible to adapt luminous fluxes to outdoor temperatures from -30 °C to +50 °C (see technical specsheet for exact temperatures availability per fixture sizes). Dual rotation to ensure maximum flexibility and versatility.

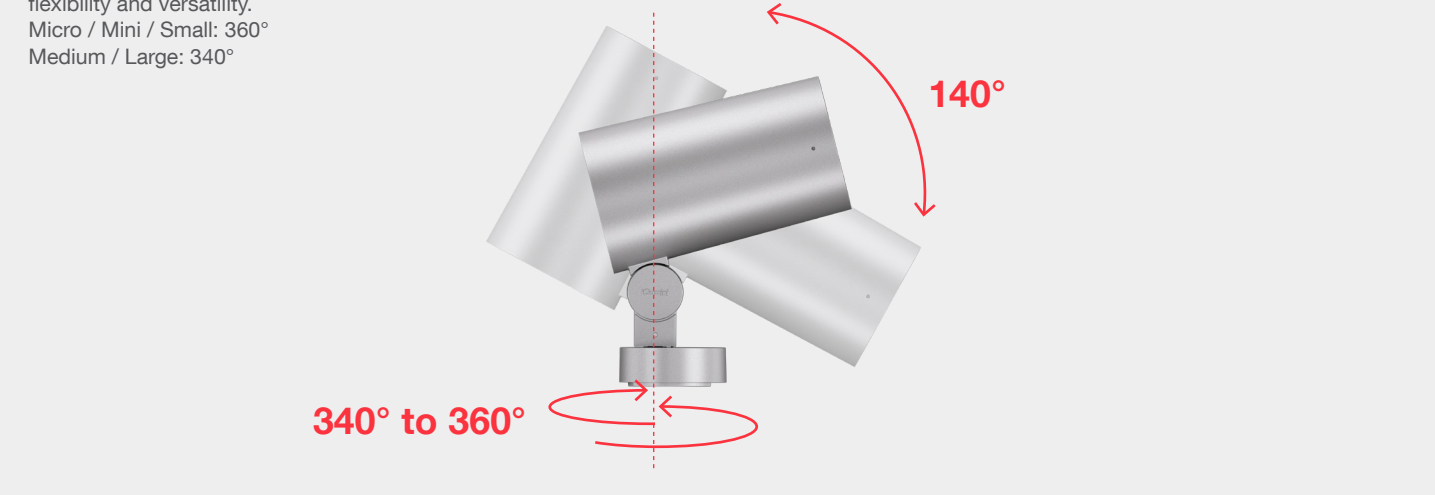
IP66
Each internal accessory is housed in a gasket to ensure upkeep of the product's IP66 grade.



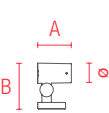
Thermal resistance
Reliability even at extreme temperatures. See technical specsheet for exact temperature availability per fixture size.






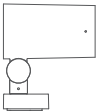


Dual rotation
The product can rotate on vertical and horizontal surfaces alike, thereby ensuring maximum flexibility and versatility.
Micro / Mini / Small: 360°
Medium / Large: 340°

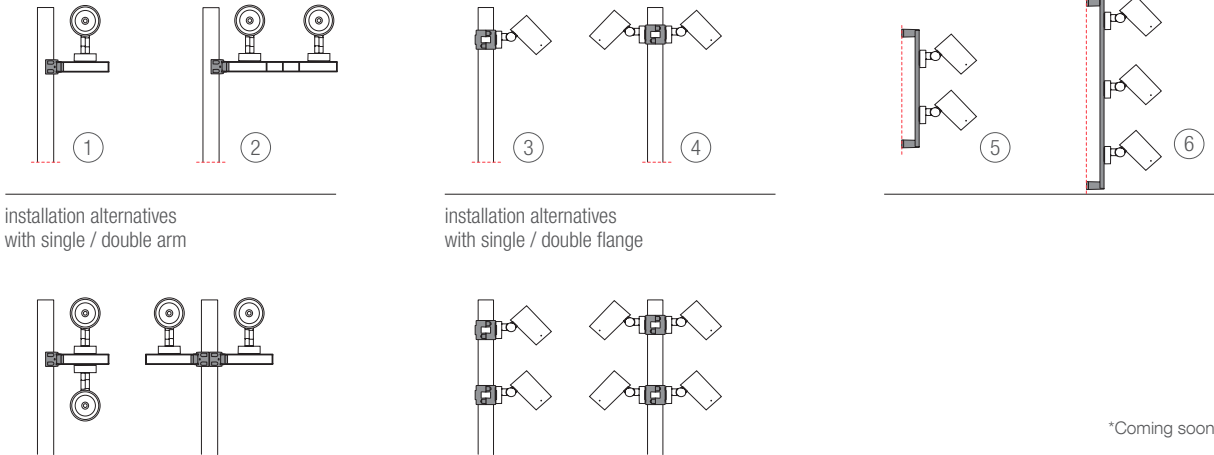


*See page 12 for size availability



	 Micro (ø30mm)	 Mini (ø49mm)	 Small (ø83mm)	 Small* (ø83mm)	 Medium (ø119mm)	 Large (ø137mm)
Dimensions						
AxB (inches)	2 x 2-7/8	3¼ x 3-5/8	5¾ x 6-1/2	5¾ x 7-5/8	8¼ x 10	9-6/8 x 11-1/8
Optics / Technology						
Opti Beam Lens	14°/25°	16°/23°		15°/25°	14°/25°	9°/18°/28°
Opti Beam Reflector		42°	15°/25°/41°/78°	41°	47°/80°	41°/79°
Accessories						
Refractor for elliptical distribution	•	•	•	•	•	•
Diffuser glass	•	•	•	•	•	•
Honeycomb louvre	•	•	•	•	•	•
Blade louvre			•	•	•	•
Cylindrical screen	•	•	•	•	•	•
Cylindrical Screen at 45°	•	•	•	•	•	•
Directional flap					•	•
Frame (directional flaps)					•	•
Protection grille					•	•
Mounting accessories						
Spike	•	•	•	•		
Junction box kit	•	•	•	•		
On pole with arms single (1) / double (2) (coming soon)				•	•	•
On pole with flange single (3) / double (4) (coming soon)				•	•	•
Wall-mounted with double (5) / triple (6) support (coming soon)				•	•	•
Insulation Class						
Class III	•	•	•			
Class II (complete with power supply)				•	•	•

MultiPalco InOut possible installations on poles 16'-4 7/8" / 19'-8 1/4" / 22'-11 5/8" / 26'-3" / 29'-6 3/8" / 39'-4 1/2" (dimensions refer to the height of the pole above ground)



*Coming soon

