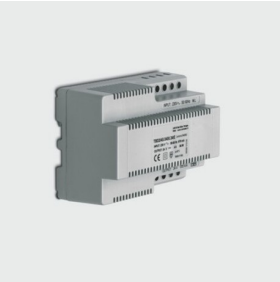


Constant voltage power supply unit non dimmable DIN rail 96W - VIN = 220-240VAC 50/60Hz Vout = 24V IMAX = 4A

Last information update: July 2025



Accessory code

9911: Constant voltage power supply unit non dimmable DIN rail 96W - VIN = 220-240VAC 50/60Hz Vout = 24V IMAX = 4A

Attention! Code no longer in production

Technical description

Electronic power supply designed to mount on a DIN standard profile. Vin=220-240Vac / 50-60Hz; Vout=24Vdc±2% (SELV)

Colour

Indeterminate (00)

Dimension (mm) (*)

95x72x68

* The dimensions may change according to production requirements to ensure that performance levels and installation methods are observed.

Complies with EN60598-1 and pertinent regulations



Technical data

Control: ☐ On/off