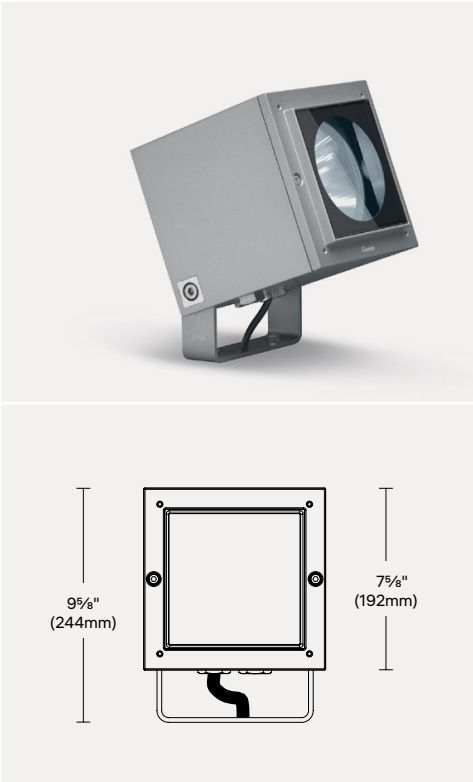


IPro 7  
Projector - Integral

Project: \_\_\_\_\_  
Type: \_\_\_\_\_



Collection of outdoor projectors available in five sizes, ideal for urban architecture and residential environments. Featuring a compact, streamlined design to simplify installation and maintenance while ensuring minimal visual impact.

PHOTOMETRIC SUMMARY

Output	Optic	Lumens (lm)	Efficacy (lm/W)	Max Candela (cd)
HO	MD - 16°	4 310	102	30 205
HO	FL - 31°	4 305	102	14 055
HO	WF - 46°	4 310	102	7 800

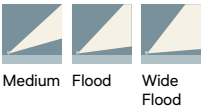
For 3000K, 80CRI. Consult [page 7](#) for full photometric data.

FINISH OPTIONS



Consult factory for custom finishes

OPTIC OPTIONS



FEATURES

- Pole specification [page 2](#)
- Vertical or horizontal surface mounting [page 3](#)
- 0-10V (120-277V) down to 10% Triac and ELV (120V) down to 15%
- Additional sizing available with integral driver: [3 \( 3 1/4" \)](#), [5 \( 5 1/4" \)](#) & [6 \( 6 1/8" \)](#)
- Additional sizing available with remote driver: [2 \( 2" \)](#) & [2 with Snoot \( 2" \)](#)
- Consult factory for further customization
- Full specification available [page 5](#)



ORDERING INFO

PRODUCT CODE

EXAMPLE: IIPRO-LC-P-BO-830-WF-UNV-01-D10

MODEL	MOUNTING	OUTPUT	LED	OPTIC	VOLTAGE	FINISH	DIMMING
IIPRO-LC iPro 7 7 5/8" (192mm)	P Projector	BO Base Output (27.5W)	830 3000K, 80CRI	MD Medium 16°	UNV 120-277V	01 White	D10 0-10V (down to 10%)
		HO High Output (42W)	840 4000K, 80 CRI	FL Flood 31°		02 Black	LTE Leading and trailing edge (120V only)
				WF Wide Flood 46°		15 Gray	
						F5 Rust Brown	
						RAL# <sup>1</sup> Custom RAL	

<sup>1</sup> Additional fees may apply for custom finish. Contact factory for details.

ACCESSORIES

To be ordered separately.

CONNECTION ACCESSORY CODE

EXAMPLE: 9029-9030-KIT

CONNECTION ACCESSORIES	
More information available on <a href="#">page 3</a> .	
<b>9023-9024-KIT</b> Female and male connector for leading and trailing edge (LTE) and no dimming	<b>9029-9030-KIT</b> Female and male connector for 0-10V (D10) dimming.

OPTIC ACCESSORY CODE

EXAMPLE: IBZ77-01 +IBZ80 +IBZ79 + IBZ87(4)

OPTIC ACCESSORIES
Available optic accessories are available on <a href="#">page 4</a> .

**IPro 7****Projector - Integral**

Project: \_\_\_\_\_

Type: \_\_\_\_\_

**POLE SPECIFICATION**

To be ordered separately.  
For installation consult instruction sheet.

**POLE SPECIFICATION****iGuzzini Pole**

**Diameter** Ø4" (Ø 102mm)  
**Shape** Round  
**Model** Straight  
**Installation** Anchor bolts  
**Access Door** Included

**Supplied by other**

Pole provided by another manufacturer

**Height**

ft

**Finish**

01 - White RAL9016\*

02 - Black RAL9005\*

**Material**

Aluminum

15 - Gray RAL9007\*

F5 - Rust Brown RAL8017\*

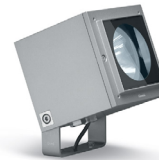
Galvanized Steel

RAL# Enter custom RAL

\* We provide RAL numbers that are similar, but we cannot guarantee an exact color match. For a more accurate color and gloss match, please contact customer service for a sample chip.

**POLE-MOUNTED ACCESSORIES**

To be ordered separately.  
For installation, consult instruction sheet.  
Pole Ø: 4" (102mm).



**IPro 7 (LC)**  
**EPA** 0.72ft² (0.067m²)

To have the total EPA, add all the EPA values  
for each items in the composition.

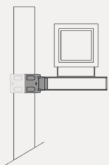
**FINISH**

**01**  
White

**02**  
Black

**15**  
Gray

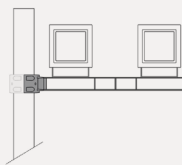
**F5**  
Rust Brown

**POLE INSTALLATION WITH ARMS****I6116**

Arm for 1/2 floodlights

**Length** 1' 3 3/8" (390mm)  
**Weight** 5.07lb (2.3kg)  
**EPA** 0.11ft² (0.011m²)

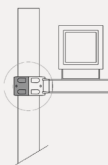
Max configuration  
possible: One up and one  
down. Need one adapter  
I6119 per fixture.

**I6117**

Arm for 2/4 floodlights

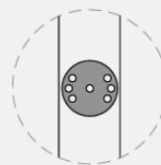
**Length** 2' 6 1/4" (785mm)  
**Weight** 9.48lb (4.3kg)  
**EPA** 0.17ft² (0.016m²)

Max configuration  
possible: Two up and two  
down. Need one adapter  
I6119 per fixture.

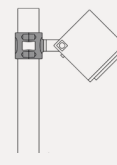
**I6118**

Counter Flange

**Length** 6 1/4" (160mm)  
**Weight** 1.10lb (0.5kg)  
**EPA** 0.06ft² (0.006m²)

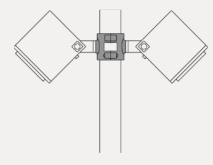
**I6119**Adapter disk for I6116  
and I6117.**Weight** 0.22lb (0.10kg)

Need one for each  
fixture

**POLE INSTALLATION WITH FLANGES****I6111**

Flange for 1 floodlight

**Weight** 1.98lb (0.9kg)  
**EPA** 0.13ft² (0.013m²)

**I6112**Flange for 2  
floodlights

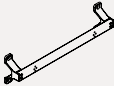
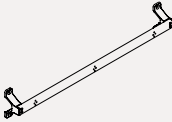

**Weight** 2.20lb (1kg)  
**EPA** 0.13ft² (0.013m²)

Project: \_\_\_\_\_  
Type: \_\_\_\_\_

MULTI SUPPORT & VERTICAL INSTALLATION

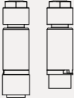

To be ordered separately.  
For installation, consult instruction sheet.

FINISH			
01 White	02 Black	15 Gray	F5 Rust Brown

MULTI SUPPORT		VERTICAL INSTALLATION
		
<b>I6014</b> For 2 floodlights	<b>I6015</b> For 3 floodlights	<b>IBZ91</b> Adjustable L-Shaped Bracket
<b>Dimensions</b> 37 7/8 x 9 1/4 x 5 1/2" (962 x 236 x 141mm)	<b>Dimensions</b> 61 1/4 x 9 1/4 x 5 1/2" (1560 x 236 x 141mm)	<b>Dimensions</b> 4.52 x 6.69 x 3.27" (115 x 170 x 83mm)

CONNECTION ACCESSORIES

To be ordered separately.

WATERPROOF IP68 FIELD CONNECTOR	
No finish option available.	
	
<b>9023-9024-KIT</b> Female and male connector for leading and trailing edge (LTE) and no dimming. (0.19"- 0.37" (5-9.5mm) cable, 3poles 16-24 AWG conductors)	<b>9029-9030-KIT</b> Female and male connector for 0-10V (D10) dimming. (0.19"- 0.37" (5-9.5mm) cable, 5poles 16-24 AWG conductors)

Project: \_\_\_\_\_  
Type: \_\_\_\_\_

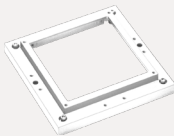
OPTICAL ACCESSORIES

To be ordered separately.

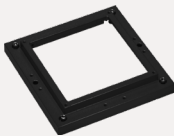
OPTICAL ACCESSORY CODE EXAMPLE: IBZ77-01 +IBZ80 +IBZ79 + IBZ87(4)

OPTICAL ACCESSORIES

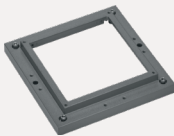
REQUIRED SUPPORT FRAME



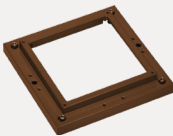
**IBZ77-01**  
Support Frame  
  
Color White



**IBZ77-02**  
Support Frame  
  
Color Black

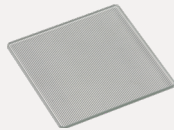


**IBZ77-15**  
Support Frame  
  
Color Gray

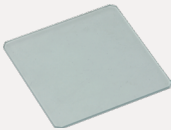


**IBZ77-F5**  
Support Frame  
  
Color Rust Brown

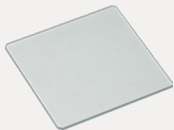
UNDER SUPPORT FRAME OPTICAL ACCESSORIES (2 MAX)



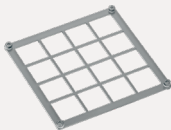
**IBZ80**  
Refractor for Elliptical Distribution



**IBZ79**  
Diffuser Glass

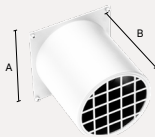


**I1154**  
Prismatic Diffuser Glass

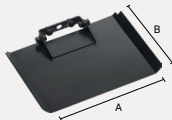


**IBZ85**  
IK09 Protective Grid  
  
Color Stainless Steel

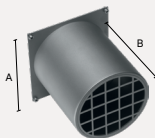
OVER SUPPORT FRAME OPTICAL ACCESSORIES (1 MAX)



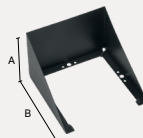
**IBZ86-01**  
Cylindrical Screen  
  
Color White / Black  
A: 6¼" (159mm)  
B: 6½" (165mm)



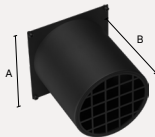
**IBZ87**  
Directional Flap  
  
Enter QTY (max. 4 Flaps)  
  
Color Black  
A: 4⅝" (117mm)  
B: 6⅝" (168mm)



**IBZ86-15**  
Cylindrical Screen  
  
Color Gray / Black  
A: 6¼" (159mm)  
B: 6½" (165mm)



**IBZ88'**  
Visor  
  
Color Black  
A: 3⅞" (91mm)  
B: 4⅝" (117mm)



**IBZ86-02**  
Cylindrical Screen  
  
Color Black / Black  
A: 6¼" (159mm)  
B: 6½" (165mm)

1 The visor doesn't require the support frame.  
See instruction sheet for uses recommendation.

**IPRO 7****Projector - Integral**

Project: \_\_\_\_\_

Type: \_\_\_\_\_

**SPECIFICATIONS****LUMEN MAINTENANCE**

90% of initial lumens at 100 000 hours (L90 B10) T77°F (25°C)  
 90% of initial lumens at 100 000 hours (L90 B10) T104°F (40°C)

**MATERIAL****Optical body and frame:** Die-cast aluminum**Reflector:** Formed aluminum**Lens:** PMMA and thermoplastic.**Protective Screen:** 1/8" (4mm) tempered sodium-calcium glass.**MOUNTING**

Wall and pole mounting system. Supplied with 3ft (1m) of power cable.

**ADJUSTMENT**

Adjustable 95°/5° from horizontal line.

**ELECTRICAL**

Integral high efficiency LED driver rated at 50 000 hours, 120-277V.

**DIMMING**

0-10V (120-277V) down to 10%.

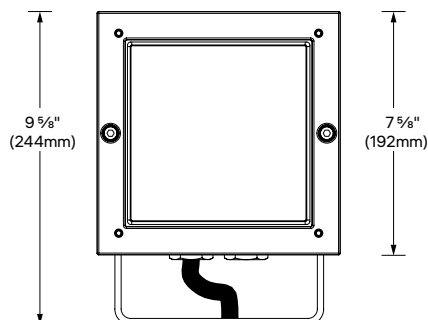
TRIAC and ELV (120V) down to 15%.

**FINISH**

Black (RAL9005), Gray (RAL9007), Rust Brown (RAL8017), and White (RAL9016) painted with a high level of weather and UV resistance. The semi-gloss finish coating is electrostatically applied durable acrylic enamel baked at high temperatures for superior color retentive finish. We provide RAL numbers that are similar, but we cannot guarantee an exact color match. For a more accurate color and gloss match, please contact customer service for a sample chip.

**OPERATING TEMPERATURE****BO:** -20°C to 35°C (-4°F to 95°F);**HO:** -20°C to 35°C (-4°F to 95°F);**WEIGHT**

13.2lb (6.0kg)

**DIMENSIONS**

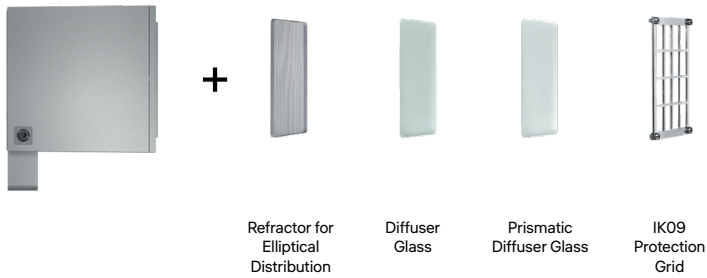
# IPro 7

## Projector - Integral

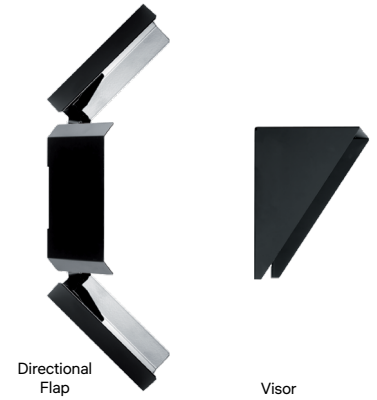
Project: \_\_\_\_\_  
Type: \_\_\_\_\_

### PROFESSIONAL ACCESSORIES

#### UNDER SUPPORT FRAME ACCESSORIES (Choose up to two)



#### OVER SUPPORT FRAME ACCESSORIES (Choose only one)



### FAMILY OVERVIEW

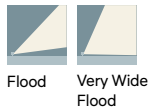
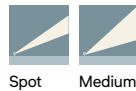
Low voltage version with remote LED driver



**CM - IPro 2**  
2" (51mm)



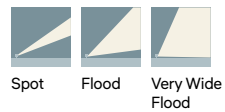
**CO - IPro 2 + SNOOT**  
2" (51mm)



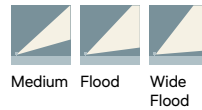
Line voltage version with integral LED driver



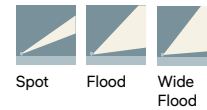
**NM - IPro 3**  
3¼" (81mm)



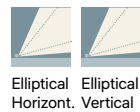
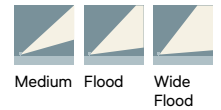
**SC - IPro 5**  
5¼" (132mm)



**MC - IPro 6**  
6⅛" (155mm)



**LC - IPro 7**  
7⅝" (192mm)



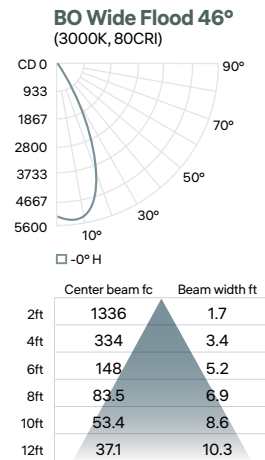
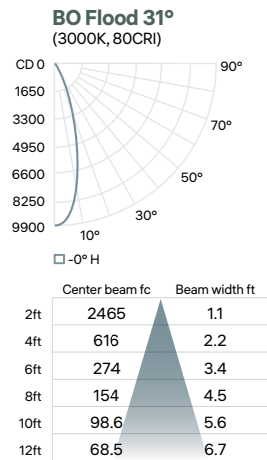
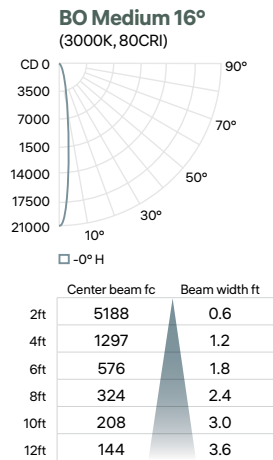
**IIPRO 7****Projector - Integral**

Project: \_\_\_\_\_

Type: \_\_\_\_\_

**PHOTOMETRIC DATA**

CCT (K)	CRI	OUTPUT	POWER (W)	OPTIC	LUMENS (lm)	EFFICACY (lm/W)	MAX CANDELA (cd)	MODELS
3000	80	BO	27.5	Medium 16°	3 035	110	20 750	IIPRO-LC-P-BO-830-MD
				Flood 31°	3 030	110	9 855	IIPRO-LC-P-BO-830-FL
				Wide Flood 46°	3 035	110	5 500	IIPRO-LC-P-BO-830-WF
		HO	42	Medium 16°	4 310	102	30 205	IIPRO-LC-P-HO-830-MD
				Flood 31°	4 305	102	14 055	IIPRO-LC-P-HO-830-FL
				Wide Flood 46°	4 310	102	7 800	IIPRO-LC-P-HO-830-WF



CCT options	3000K	4000K
CRI options	80CRI	80CRI
<b>Multiplier</b>	<b>1</b>	<b>1.03</b>