

Last information update: October 2024

**Product configuration: S603**

S603: 47 surface Integral - Warm White - on/off - L=908mm - Spot optic

**Product code**S603: 47 surface Integral - Warm White - on/off - L=908mm - Spot optic **Attention! Code no longer in production****Technical description**

Direct light luminaire with monochrome LED lamps. It consists of a body and installation brackets to be ordered separately. The body is made of extruded aluminium and includes die-cast aluminium end caps with 50/60 Shore A silicone seals. It is subjected to a multi-step, pre-treatment process, in which the main phases are degreasing, fluorozirconation (a protective surface film) and sealing (with a nano-structured silane layer). The following painting stage consists of a primer and a liquid acrylic paint, cured at 150°C, with a high level of weather and UV ray resistance. The top of the optical assembly is closed by a 3 mm thick transparent glass screen, fixed with silicone. Complete with multi-LED power plate in Warm White and power supply on/off (power supply included). The product is supplied with a nickel-plated brass PG11 double cable gland with H07RN 2x1, 5mm<sup>2</sup> rubber outlet cables for pass-through wiring. Fitted with optics with a plastic (methacrylate) lens for Spot lighting. All external screws used are made of A2 stainless steel. The luminaire technical characteristics conform to EN 60598-1 standards and particular requirements.

**Installation**

Accessories are available for installation, like adjustable AISI304 stainless steel wall-mounted arms.

**Colour**

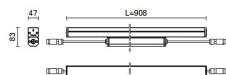
White (01) | Black (04) | Grey (15) | Rust Brown (F5)

**Weight (Kg)**

2.6

**Mounting**

wall arm|wall surface|ceiling surface

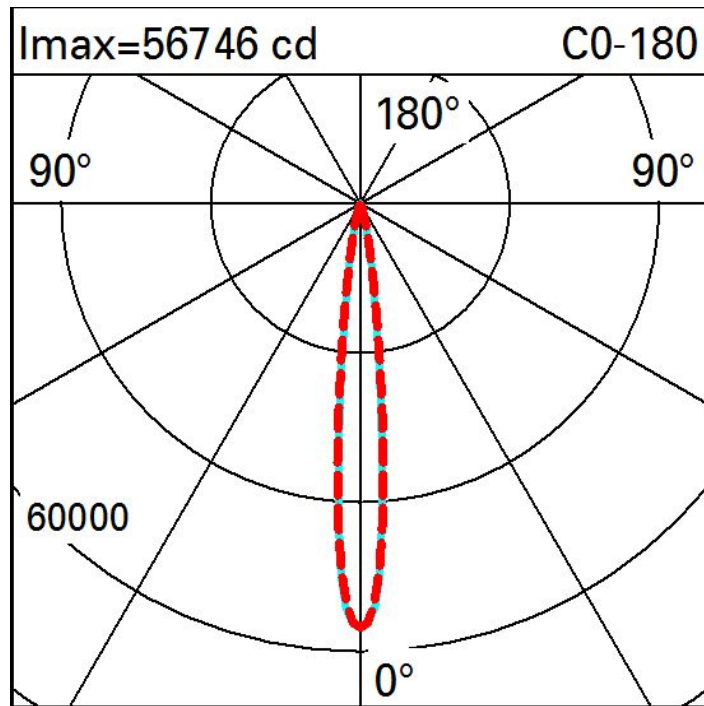


Complies with EN60598-1 and pertinent regulations

**Technical data**

Im system:	3358	MacAdam Step:	3
W system:	35.1	Life Time LED 1:	100,000h - L80 - B10 (Ta 25°C)
Im source:	4250	Life Time LED 2:	100,000h - L80 - B10 (Ta 40°C)
W source:	31	Voltage [Vin]:	230
Luminous efficiency (Im/W, real value):	95.7	Lamp code:	LED
Im in emergency mode:	-	Number of lamps for optical assembly:	1
Total light flux at or above an angle of 90° [Lm]:	0	ZVEI Code:	LED
Light Output Ratio (L.O.R.) [%]:	79	Number of optical assemblies:	1
Beam angle [°]:	12°	Intervalllo temperatura ambiente:	from -30°C to 50°C.
CRI (minimum):	80	Control:	On/off
Colour temperature [K]:	3000		

Polar



Illuminances

