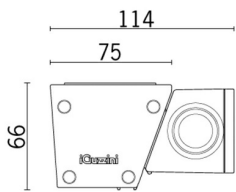
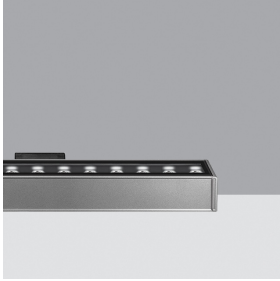


Last information update: May 2024

Product configuration: BI61

BI61: Compact - Wall-/Ceiling-mounted - Neutral White LED - DALI - L=1585mm - Wall Grazing Optic

**Product code**BI61: Compact - Wall-/Ceiling-mounted - Neutral White LED - DALI - L=1585mm - Wall Grazing Optic **Attention! Code no longer in production****Technical description**

Direct light luminaire, designed to use monochrome LED lamps, Dali dimmable. Ceiling- and wall-mounted. Consists of a body and supports for installation, to be ordered separately. Extruded aluminium body, with die-cast aluminium end caps complete with silicone seals. Coated with liquid acrylic paint with a high level of weather and UV ray resistance. Lateral control gear box made of PPS (polyphenylene sulfide). The top of the optical assembly is closed by a 3 mm thick transparent glass screen, fixed with silicone. Complete with multi-LED plate in Neutral White. Fitted with optics with plastic (methacrylate) lens for Wall Grazing lighting. The lateral box is supplied with a double connector, male/female, with 5-pin quick coupling for pass-through wiring and a closing cap on one side. Set up for pass-through earth wiring. All external screws used are made of A2 stainless steel. The luminaire technical characteristics conform to EN 60598-1 standards and particular requirements.

Installation

Accessories available for installation: $\pm 90^\circ$ adjustable arms L=138mm (code 5576), arms extendable from 309 to 389mm and adjustable $\pm 90^\circ$ (code 5577), bracket for wall-mounting L=670mm (code BZ11), brackets for mounting on balustrades L297mm (code 5578), bracket for surface- or ceiling-mounting L=644mm (code 5571).

Colour

Grey (15)

Weight (Kg)

4.49

Mounting

wall surface/ceiling surface

Wiring

The product is supplied with electronic control gear, Dali dimmable 220÷240Vac, 50/60Hz contained in the luminaire. Available for electrical connection and Dali control: IP66 5-pin female connector (BZI5), IP66 5-pin male connector + closing cap (BZI6), IP66 5-pin male connector + female connector (BZI7), multi-pole cable units with 5-pin male + female connectors (BZJ3-BZJ4-BZJ5)

Notes

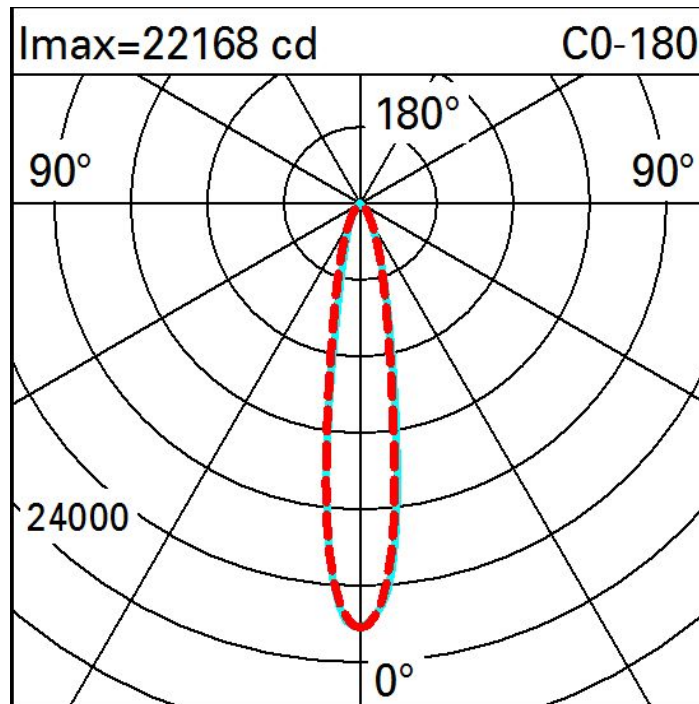
Product complete with LED lamp. The electronic board takes one Dali address, absorbs one Dali load.

Complies with EN60598-1 and pertinent regulations

**Technical data**

Im system:	3663	MacAdam Step:	3
W system:	43.3	Life Time LED 1:	100,000h - L80 - B10 (Ta 25°C)
Im source:	5550	Life Time LED 2:	100,000h - L80 - B10 (Ta 40°C)
W source:	37	Voltage [Vin]:	230
Luminous efficiency (Im/W, real value):	84.6	Lamp code:	LED
Im in emergency mode:	-	Number of lamps for optical assembly:	1
Total light flux at or above an angle of 90° [Lm]:	0	ZVEI Code:	LED
Light Output Ratio (L.O.R.) [%]:	66	Number of optical assemblies:	1
CRI (minimum):	80	Intervallo temperatura ambiente:	from -30°C to 50°C.
Colour temperature [K]:	4000	Control:	DALI

Polar



Illuminances

Lux												Wall distance = 1m	
3	0.2	0.5	1	4	11	15	11	4	1	0.5	0.2		
2	0.9	2	4	10	26	43	26	10	4	2	0.9		
	1	3	7	32	105	142	105	32	7	3	1		
1	2	4	15	59	103	137	103	59	15	4	2		
	3	9	29	53	93	131	93	53	29	9	3		
0													
	m	-2	-1		0		1	2	3				