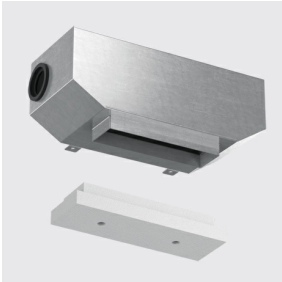


Outer casing complete with adapter for recessed installation on concrete ceilings

Last information update: February 2023



Accessory code

X114: Outer casing complete with adapter for recessed installation on concrete ceilings

Technical description

Painted sheet steel outer casing for concrete ceilings with adapter for flush installation and closing cap. Made of painted sheet steel. For Laser Blade InOut version with fifteen optical elements (L=423mm).

Installation

On concrete ceilings. Recommended particle size for inert elements in concrete 0-25mm. For further information, please consult the instruction sheet.

**Colour**  
Indeterminate (00)

**Weight (Kg)**  
2.5

Complies with EN60598-1 and pertinent regulations

