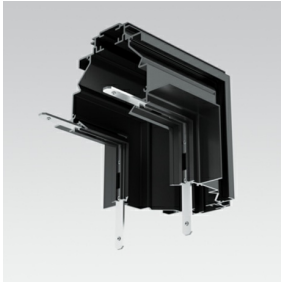


Laser Blade

Design iGuzzini

iGuzzini

Last information update: May 2024



Product code

MXN5: 90° angular section ceiling - wall **Attention! Code no longer in production**

Technical description

Extruded aluminium part, black powder coating finish. Allows for a 90° angular connection between the ceiling and an adjacent wall (horizontal/vertical), creating two channel branches at right angles.

Installation

recessed in false ceilings (set up for panels, max thickness 12.5 mm). Dimensions of the preparation cut: 120 mm; profile fixing with screws. The installation includes the filling, smoothing, finishing and painting operations, required to uniform the profile structure to the surface of the false ceiling. The angular section can be joined with other profiles and end profiles. We recommend positioning the false ceiling support frame close to the angular section, which is designed to support some of the most common support or suspension parts. Important: to facilitate the insertion of this angular section the opening must be of 120 mm instead of 110 mm. The difference in size does not compromise the stability of the structure and can easily be covered over at the finishing stage.

Colour

Black (04)

Weight (Kg)

0.49

Wiring

The module is fitted with connectors on both sides for connecting with subsequent modules. For connections at greater distances, there are accessory connectors (code MXN6 - cables not included).

Notes

Important: for a correct preliminary setting of the system check the overall dimensions set out in the instructions sheet

Complies with EN60598-1 and pertinent regulations

