

IMPORTANT - READ CAREFULLY BEFORE INSTALLING FIXTURE. RETAIN THESE INSTRUCTIONS FOR FUTURE REFERENCE.
 THIS PRODUCT MUST BE INSTALLED IN ACCORDANCE WITH THE NATIONAL ELECTRICAL CODE AND ALL APPLICABLE LOCAL CODES, BY A PERSON FAMILIAR WITH THE CONSTRUCTION AND OPERATION OF THE PRODUCT, AND THE HAZARDS INVOLVED. PROPER GROUNDING IS REQUIRED FOR SAFETY.

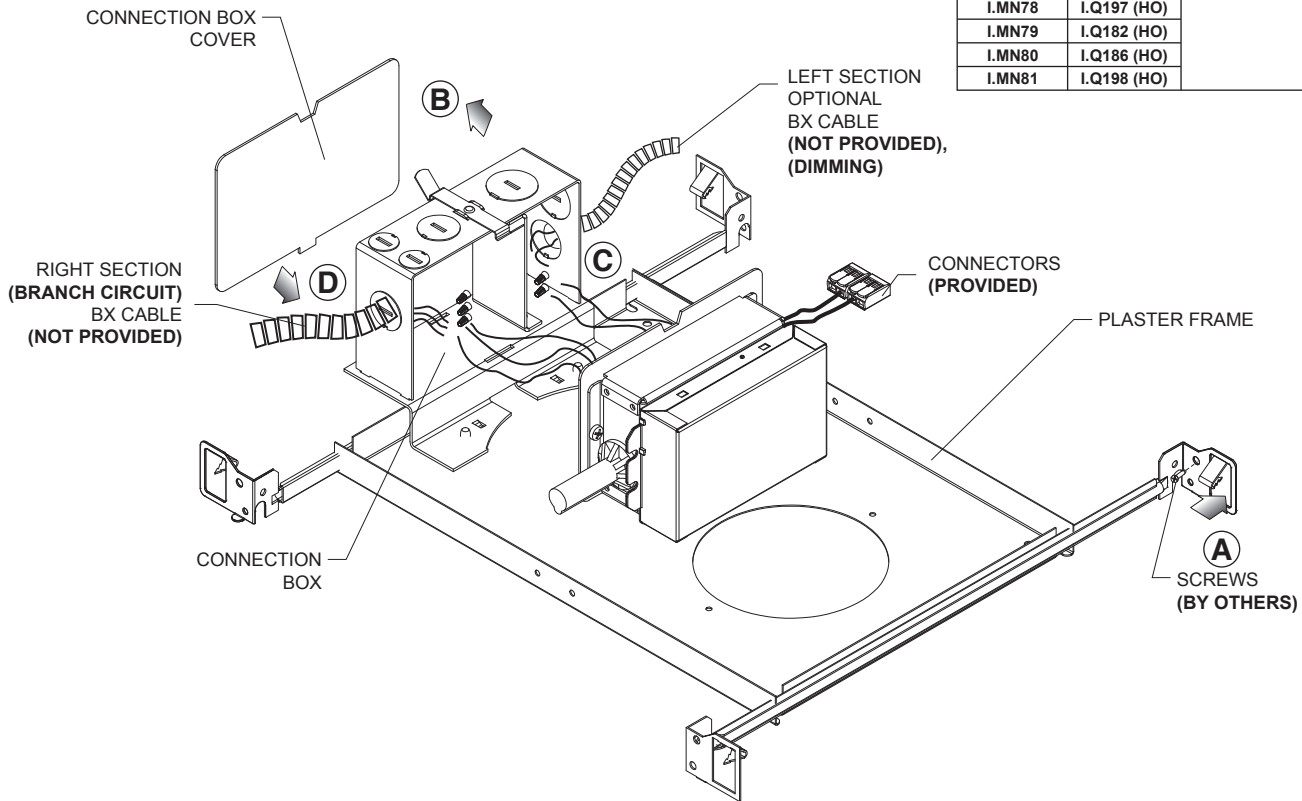
**I.MM31, I.MD91, I.MD92, I.MD93, I.MM32, I.MD94, I.MD95, I.MD96, I.MN78, I.MN79, I.MN80, I.MN81
 I.Q179, I.Q183, I.Q195, I.Q180, I.Q184, I.Q196, I.Q181, I.Q185, I.Q197, I.Q182, I.Q186, I.198**

STEP 1

- A - INSTALL PLASTER FRAME TO CEILING STRUCTURE USING SCREWS (BY OTHERS)
- B - UNCLIP CONNECTION BOX COVER FROM CONNECTION BOX.
- C - MAKE ALL NECESSARY CONNECTIONS IN CONNECTION BOX. (SEE WIRING DIAGRAM)
- D - CLIP CONNECTION BOX COVER ON THE CONNECTION BOX. MAKE SURE ALL ELECTRICAL WIRING IS WELL PLACED IN THE CONNECTION BOX.

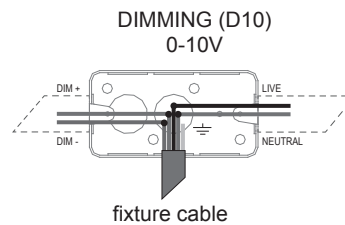
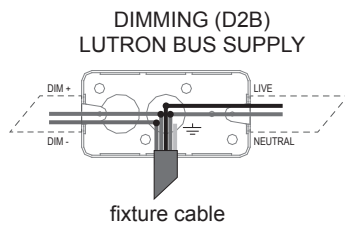
BN-XXXX-XXX-NC-D10				
OPEN CEILING FRAME	MODEL NUMBER	120V OR 277V	PLASTER FRAME	DIMMING TYPE

MODEL		MOUNTING
I.MM31	I.Q179 (HO)	BN-XXXX-XXX-NC BN-XXXX-XXX-NC-D10 BN-XXXX-XXX-NC-D2B
I.MD91	I.Q183 (HO)	
I.MD92	I.Q195 (HO)	
I.MD93	I.Q180 (HO)	
I.MM32	I.Q184 (HO)	
I.MD94	I.Q196 (HO)	
I.MD95	I.Q181 (HO)	
I.MD96	I.Q185 (HO)	
I.MN78	I.Q197 (HO)	
I.MN79	I.Q182 (HO)	
I.MN80	I.Q186 (HO)	
I.MN81	I.Q198 (HO)	



(C)

LIVE	BLACK
NEUTRAL	WHITE
≡	GREEN
DIM + / -	PURPLE
DIM -	GRAY



*junction box for reference only

STEP 2

- E - MAKE ALL NECESSARY PLASTER WORK AND MAKE CUT-OUT (SEE CUT-OUT TABLE).
- F - USE THE PROVIDED CONNECTORS TO CONNECT THE FIXTURE WIRES TO CONNECTION BOX WIRES.
- G - INSERT FIXTURE ASSEMBLY IN CUT-OUT BY FIRMLY PUSHING UP BOTH FASTENING HINGES AND INSTALL FIXTURE THROUGH CUT-OUT.

CUT-OUT DIMENSION
Ø5" (Ø125mm)

