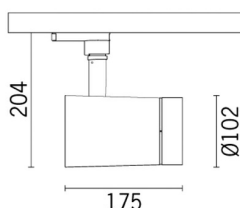


P626: small body - Neutral White - DALI - spot optic



P626: small body - Neutral White - DALI - spot optic

Adjustable spotlight with adapter for installation on mains voltage track for high-performance LED with monochromatic Neutral White (4,000K) emission. DALI ballast built-into product. The fitting is made of die-cast aluminium and thermoplastic material. It enables 360° rotation around the vertical axis and 90° inclination with respect to the horizontal plane. It is provided with mechanical locks for orientation, for both rotations, which are applied by using the same tool on two screws, one in lateral position to the rod and one on the track adapter. Passive cooling system. Spotlight able to house up to two flat accessories at the same time. One further external component can be applied, either directional flaps or anti-glare screen. All the external accessories can be rotated by 360° with respect to the longitudinal axis of the spotlight.

Mounted on electrified track on dedicated base

Colour	Weight (Kg)
White (01) Black (04)	1.28


three circuit track

DALI components contained within the fitting

Quick BLE - Bluetooth Low Energy [↗](#)

Quick DALI - Touch display 7" [↗](#)

Quick DALI LMS Quick [↗](#)

Quick DRYTIME Quick
Master Pro Evo KNX 

Complies with EN60598-1 and pertinent regulations



IP20

IP40

for optical
assembly



Im system:	2355	Life Time LED 1:	> 50,000h - L90 - B10 (Ta 25°C)
W system:	26.4	Lamp code:	LED
Im source:	3200	Number of lamps for optical assembly:	1
W source:	24	ZVEI Code:	LED
Luminous efficiency (lm/W, real value):	89.2	Number of optical assemblies:	1
Im in emergency mode:	-	Power factor:	See installation instructions
Total light flux at or above an angle of 90° [Lm]:	0	Inrush current:	18 A / 250 µs
Light Output Ratio (L.O.R.) [%]:	74	Maximum number of luminaires of this type per miniature circuit breaker:	B10A: 21 luminaires B16A: 34 luminaires C10A: 35 luminaires C16A: 57 luminaires
Beam angle [°]:	12°	Minimum dimming %:	1
CRI (minimum):	80	Overvoltage protection:	2kV Common mode & 1kV Differential mode
Colour temperature [K]:	4000	Control:	DALI-2
MacAdam Step:	2		

Polar

