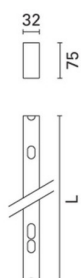
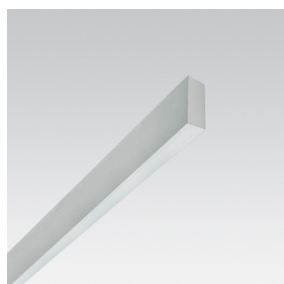


Last information update: January 2025

**Product configuration: N937**

N937: initial module L=1197 - Low Contrast - direct emission - LED - neutral white integrated DALI dimmable control gear

**Product code**N937: initial module L=1197 - Low Contrast - direct emission - LED - neutral white integrated DALI dimmable control gear **Attention! Code no longer in production****Technical description**

direct emission modular lighting system with LED lamps. Initial module for general lighting (Low Contrast); can be used independently or in a continuous line. Minimal (frameless) version extruded aluminium single length profile; methacrylate opal screen set up for connection to end caps on both sides. Installation can be recessed, surface-mounted (ceiling/wall), or pendant. The module must be completed with the accessories kit needed for the selected type of installation. DALI dimmable electronic control gear integrated in the luminaire. Neutral white high efficiency LED.

**Installation**

pendant: complete with power supply unit with cable (MWG5) and suspension cables (MWG6); surface-mounted: complete with supports (MWG7); recessed: after making the preparation slot, use the special supports to install in the false ceiling (MWG8).

**Colour**

Aluminium (12)

**Weight (Kg)**

2.1

**Mounting**

ceiling recessed|ceiling surface|ceiling pendant

**Wiring**

the module is fitted with 5-pin terminal blocks for pass-through wiring at the ends; the accessory power supply unit code MWG5 has a fixing plate with 5-pin terminal block for connection to the main power supply. DALI dimmable control gear integrated in the module.

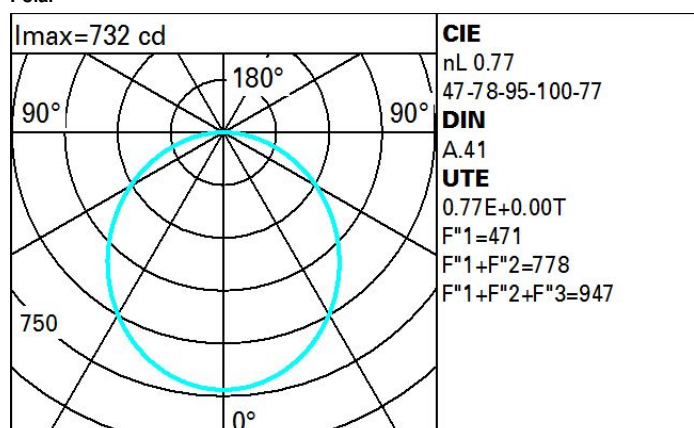
**Notes**

initial modules may be completed with accessory end caps (MX80) and used independently in the various applications. To make continuous lines of lighting, use the intermediate modules. To correctly complete a continuous line, always use an initial module at the start or end of the structure.

Complies with EN60598-1 and pertinent regulations

**Technical data**

lm system:	2032	Colour temperature [K]:	4000
W system:	20.6	MacAdam Step:	3
lm source:	2650	Life Time LED 1:	50,000h - L80 - B10 (Ta 25°C)
W source:	16	Lamp code:	LED
Luminous efficiency (lm/W, real value):	98.6	Number of lamps for optical assembly:	1
lm in emergency mode:	-	ZVEI Code:	LED
Total light flux at or above an angle of 90° [Lm]:	0	Number of optical assemblies:	1
Light Output Ratio (L.O.R.) [%]:	77	Control:	DALI
CRI:	80		

**Polar**

Utilisation factors

R	77	75	73	71	55	53	33	00	DRR
K0.8	50	42	36	32	41	36	35	30	39
1.0	55	48	42	38	46	41	41	35	46
1.5	63	57	52	48	55	51	50	45	59
2.0	68	63	58	55	61	57	56	52	67
2.5	71	66	63	60	65	61	60	56	73
3.0	73	69	66	63	67	64	63	59	77
4.0	75	72	70	67	70	68	67	63	82
5.0	77	74	72	70	72	70	69	66	85

Luminance curve limit

